



Brochure Loghouse Leoata 238.5m²(137.5+101.2)

Houtstapelbouw
(Handcrafted)

Ro-home B.V
Apeldoorn

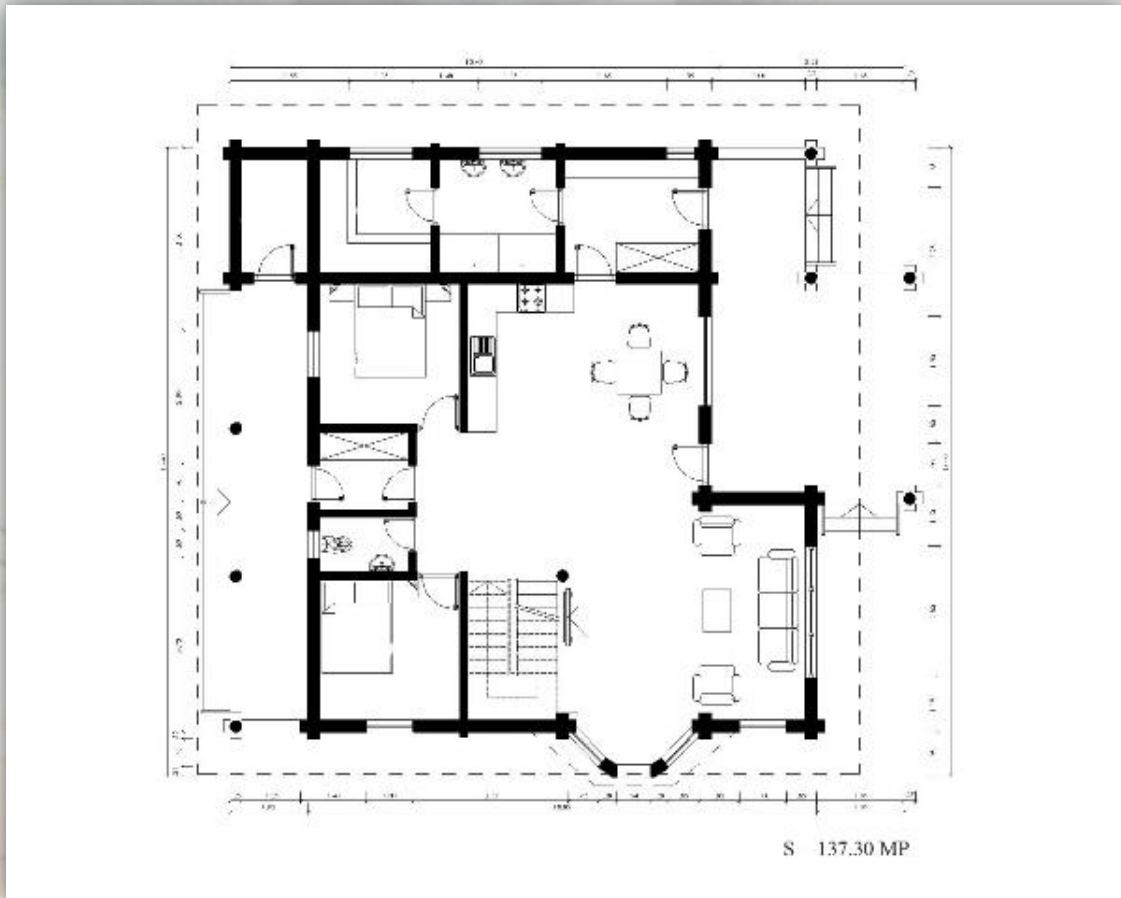


Loghouse Leoata



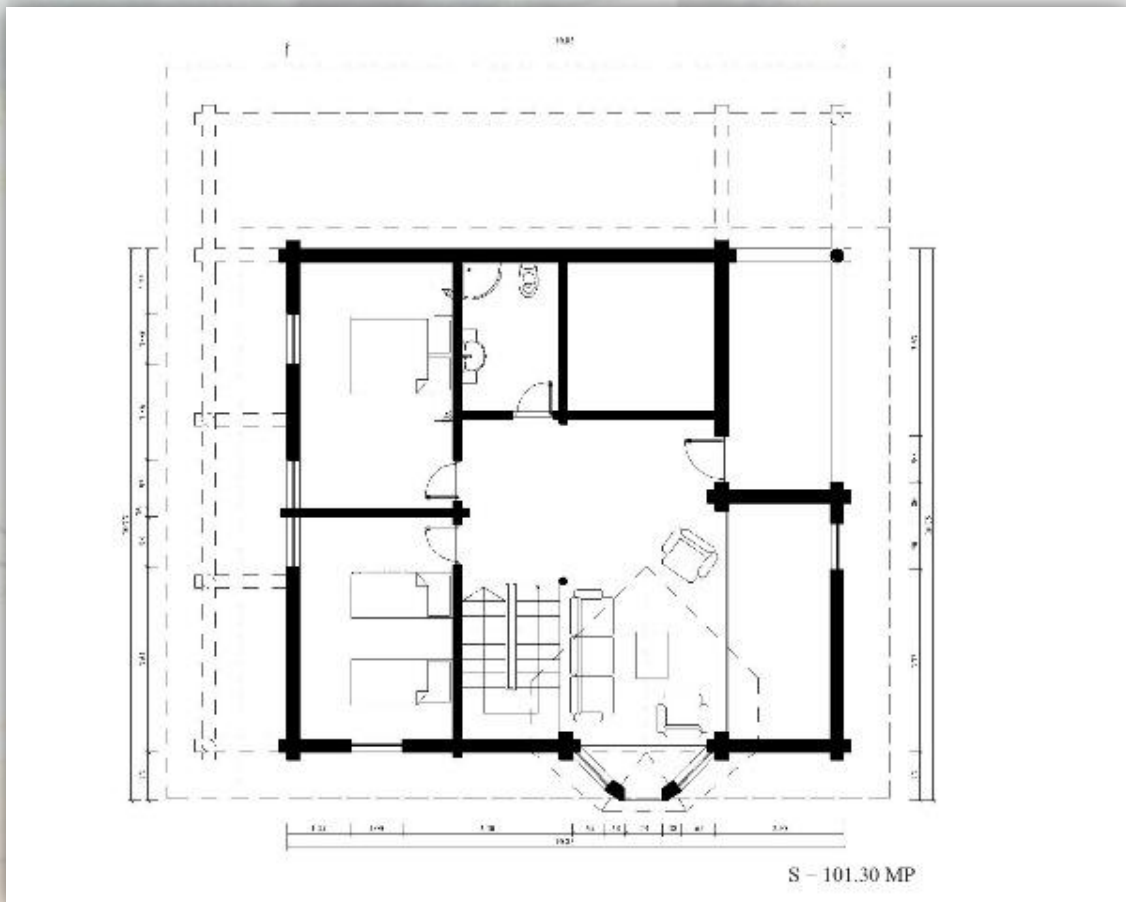


Loghouse Leoata



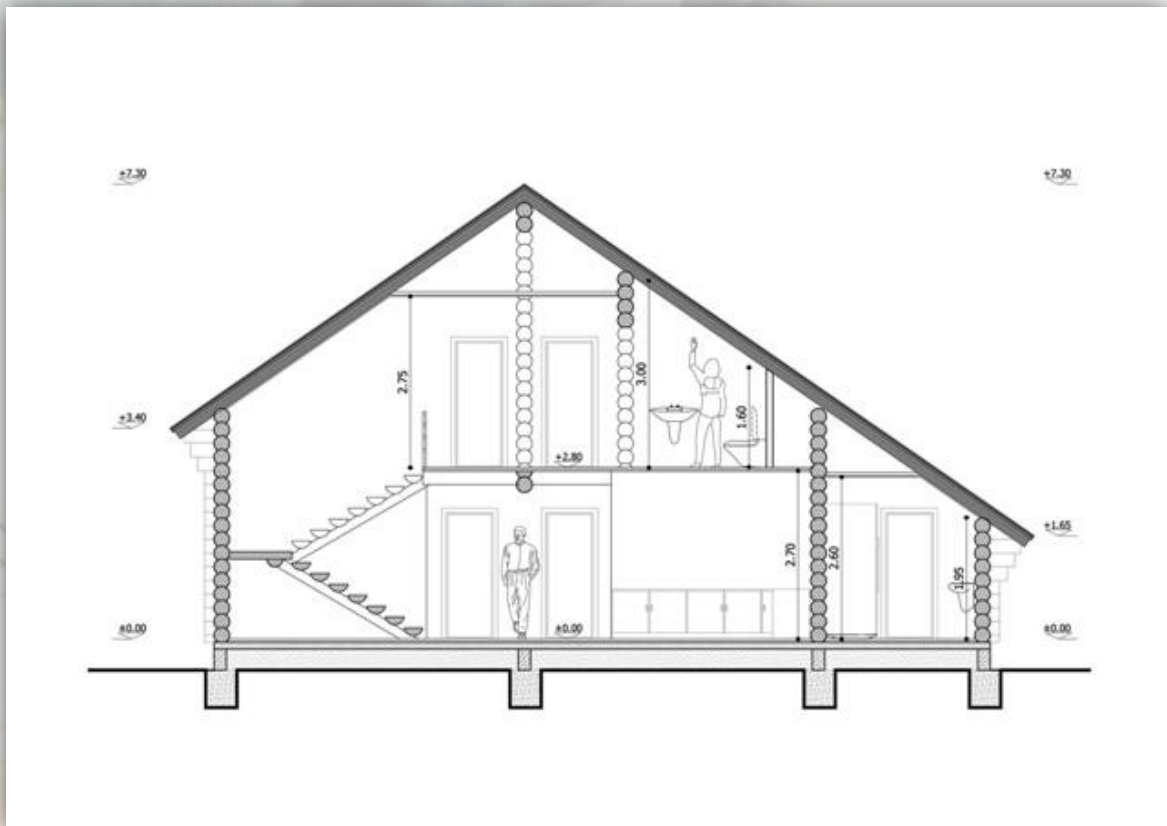


Loghouse Leoata





Loghouse Leoata





Loghouse Leoata

Specificaties loghouse

Afmetingen parterre:	13.5m x 10m = 137.3m ²
Afmetingen verdiepingsvloer:	13.5m x 10m = 101.2m ²
Hoogte verdiepingsvloer:	±2.60m
Nokhoogte:	± 7.3m
Goothoogte:	± 3.4m / ± 1.5m
Dakoverstek voor en achterzijde:	0.7m
Dakoverstek zijkanten:	0.7m